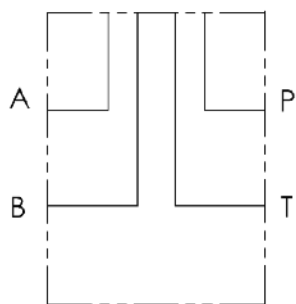
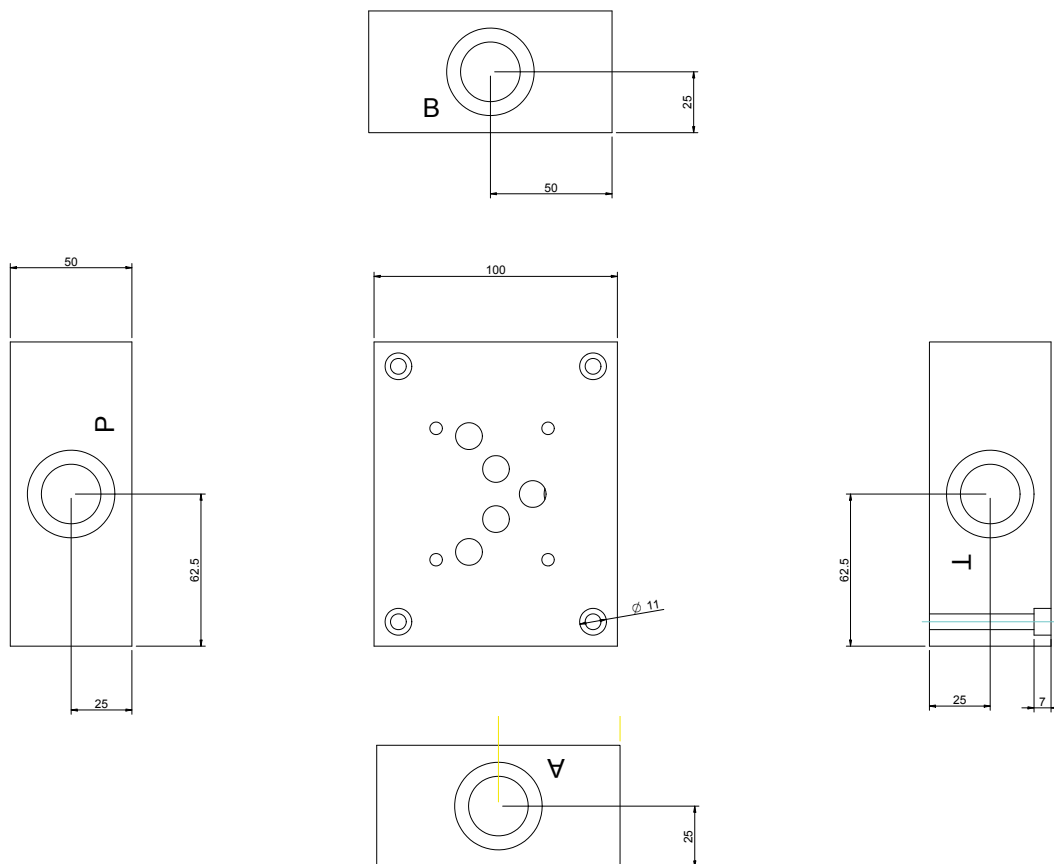


BASE CON COLLEGAMENTO P - T - A - B LATERALI A CROCE  
 SINGLE SUBPLATE WITH RADIAL SIDE P - T - A - B PORTS



Versione standard in alluminio  
 Standard type with aluminium

Pressione massima di lavoro = 250 bar  
 Max working pressure = 250 bar

## Esempio codice di ordinazione - *Ordering example*

### BSA 10 # L

Monoblocco alluminio  
 Aluminium monoblock

CETOP 5 - NG 10

C = (P - T - A - B) G1/2  
 D = (P - T - A - B) G3/4

(P - T - A - B) laterali a croce  
 Radial side (P - T - A - B) ports